

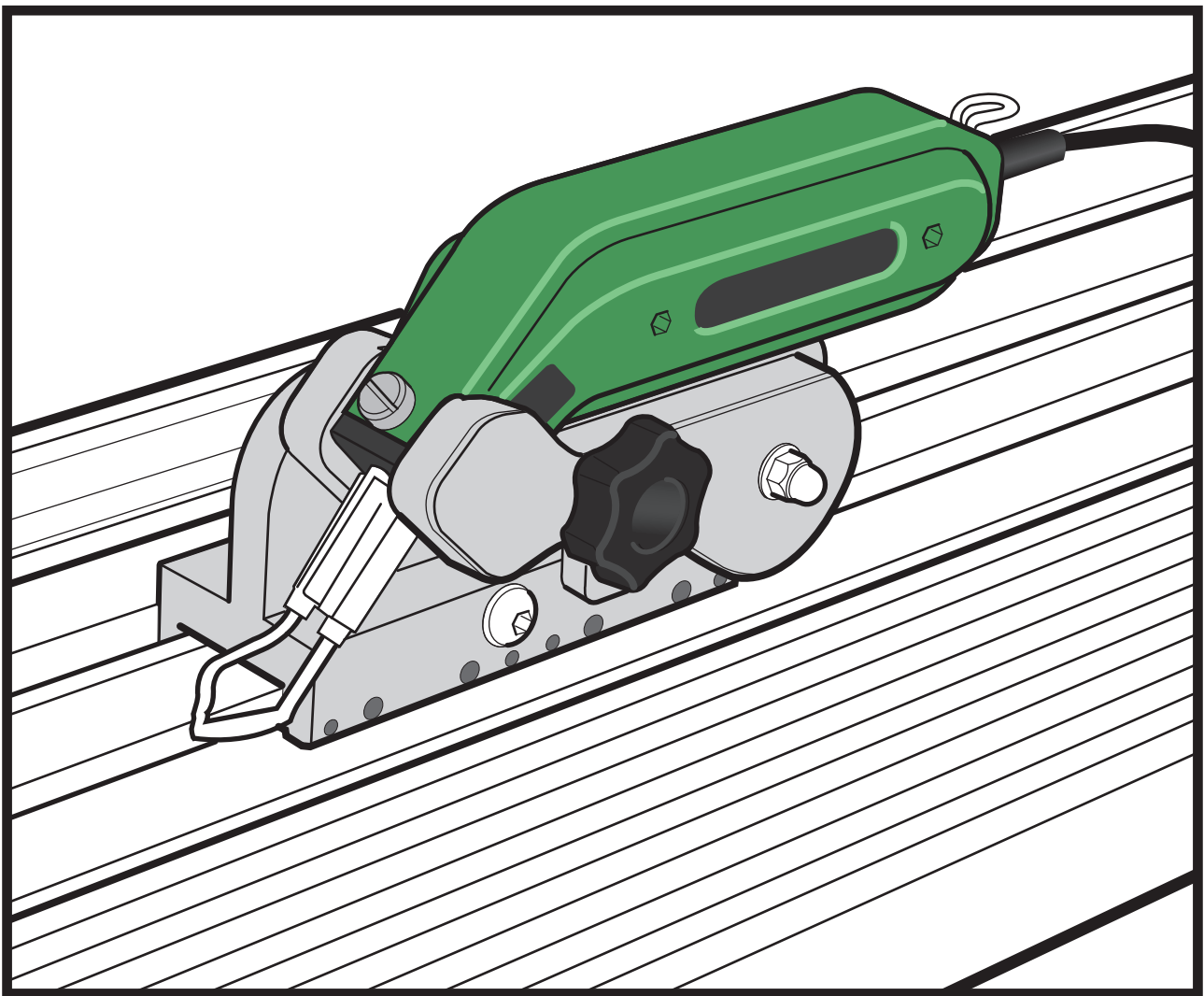


HOT KNIFE ATTACHMENT FOR EVOLUTION, SABRE OR INTEGRA

Inspired Design – Precision Engineering

USER INSTRUCTIONS

Thank you for choosing the Keencut HOT KNIFE. Every effort has been made to bring you a precision engineered product with the promise of many years of valuable service. In order to obtain maximum benefit from your machine please read these instructions carefully. For advice and assistance or replacement parts please contact your distributor or Keencut Ltd.

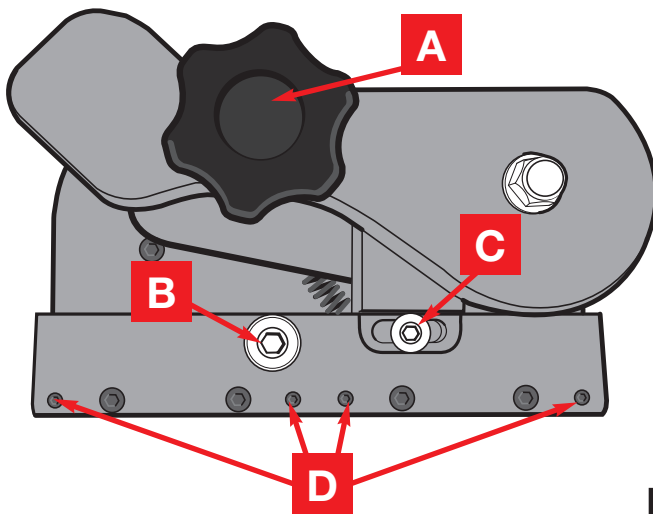


Keencut Limited, Baird Road, Willowbrook Industrial Estate, Corby, Northants, ENGLAND NN17 5ZA.
Telephone: 01536 263158 Fax: 01536 204227 E-mail: info@keencut.co.uk
www.keencut.co.uk

Preparation

How to Assemble your HOT KNIFE

The Hot Knife attachment has been designed to accept the HSG-0 Heated Knife and will need to be fitted with a Type 'R' blade. These should be available from your Keencut Distributor.

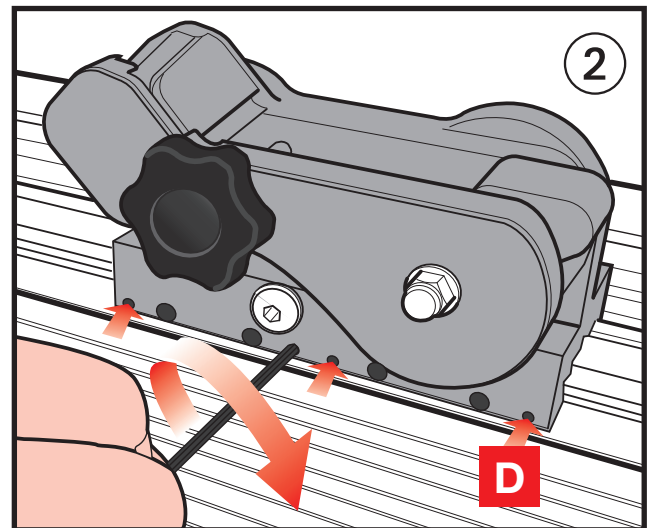
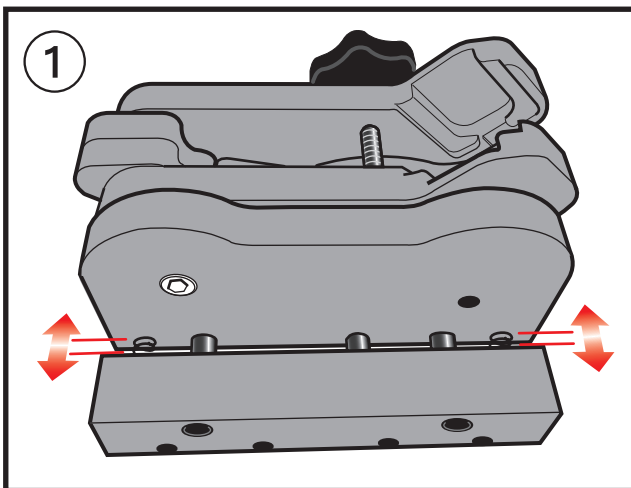


A = Tighten to clamp Hot Knife into holder

B = Loosen to open up the base when fitting on to slidaway

C = Loosen screw and slide block to adjust point at which the trigger switches the hot knife on.

D = Sliding bearing adjustment screws.



A heatproof protective surface must be placed on the base of the machine under the fabric. For long term consistent use we recommend cutting directly onto 6mm (1/4") toughened glass.

HOW TO ASSEMBLE YOUR HOT KNIFE

- ① To fit the attachment to the slidaway loosen screw **B** to create a gap in the base sufficient for it to be lowered onto the slidaway.

Tighten screw **B** and check that the cutting head runs smoothly.

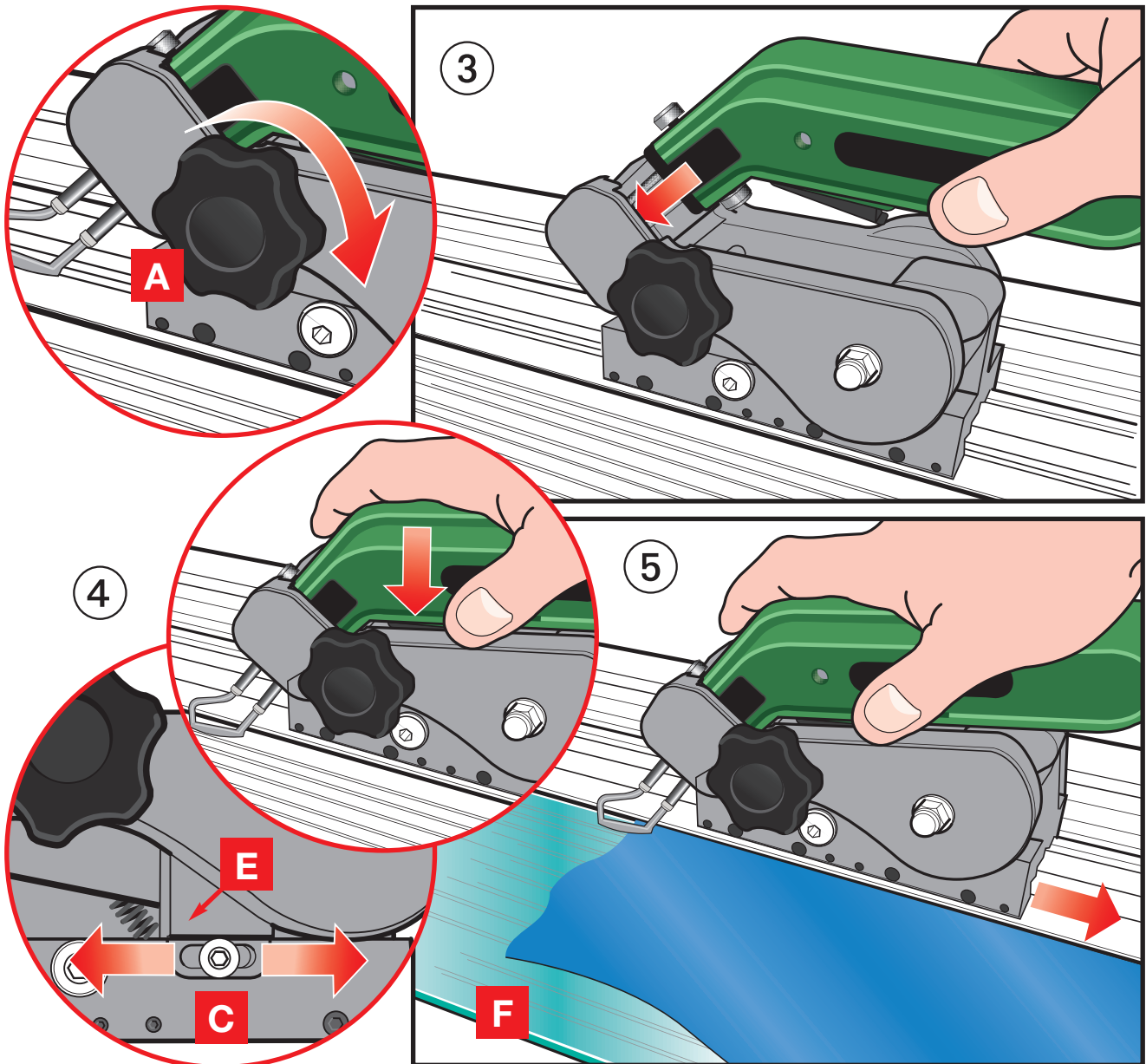
- ② If the head is too loose or too tight when moved it can be adjusted, place the long end of the 2mm Allen key provided onto one of the four adjustment screws **D** and very gradually tighten it with one hand whilst moving the Cutting Head slowly with the other. Once you feel the sliding motion start to tighten undo the screw the smallest amount so the Cutting Head just slides easily.

Repeat this on the other screws in turn, two or three smaller adjustments on each screw may be needed to achieve an easy sliding movement with zero side play.

NOTE: Once the sliding bearings have been adjusted the attachment should not need readjusting if the cutting head is removed and replaced at a later time. It is however, important that screw **B** is fully tightened each time the cutting head is fitted to the machine.

Preparation

How to Assemble your HOT KNIFE



HOW TO ASSEMBLE YOUR HOT KNIFE

- ③ To fit the Hot Knife, simply insert it into the holder ensuring the nose of the Hot Knife is seated fully into its recess.

Tighten knob **A** and check Hot Knife is fully gripped in position, the blade should cut about 2-3mm (1/16" to 1/8") away from the edge of the slideway.

- ④ Depress the Hot Knife and the trigger should switch the heat on prior to it coming into contact with the fabric.

The trigger can be adjusted to alter the position the heat is switched on by loosening screw **C** and sliding the Trigger Block **E** left or right.

- ⑤ Once the blade has reached the correct temperature press down to bring the blade in contact with the fabric and slide the cutting head to the right to seal and cut it.

A heatproof protective surface F must be placed on the base of the machine under the fabric. For long term consistent use we recommend cutting directly onto 6mm (1/4") toughened glass.