

JAVELIN INTEGRA

The high precision, cost-effective cutting solution for maximum accuracy

KEENCUT
THE WORLD'S FINEST CUTTING MACHINES

An affordable high precision cutting solution for demanding applications such as display panels and pop-ups

- Versatile cutter for a wide range of materials
- Ideal for cutting wallpaper and pop-ups
- Slimline base fits any appropriate bench
- Reduces cutting time
- Keeps wastage to a minimum
- Quick-fit interchangeable tools
- Simple and instinctive operation
- Calibrated for immediate 'out of the box' accuracy
- Manufactured and finished with premium quality materials
- Guaranteed for 5 years

Available in 4 sizes from 160cm to 310cm

Perfect for cutting ...

Semi-rigid materials

- Cardboard, PVC foam board, corrugated plastic, foam-centred board up to 13mm
- Mountboard and conservation board up to 3.5mm
- Flexible polycarbonate up to 3mm

Flexible materials

- Tough materials: banners, pop-ups, magnetic sheets
- Film and self-adhesive vinyls
- Delicate materials: wallpaper

Rigid materials (scoring)

- Cast acrylic or Plexiglas up to 3mm

If your material is not in the list above we offer a free test cut service - for details please email sales@keencut.co.uk



KEENCUT

Baird Road
Willowbrook Industrial Estate
Corby, Northants, England
NN17 5ZA, United Kingdom

Tel: +44 (0)1536 263158
sales@keencut.co.uk
www.keencut.co.uk

**MADE IN
BRITAIN**



Ultra High Precision - Guaranteed to cut within 0.2mm of a straight line for the whole length of the cutter

www.keencut.co.uk

Accurate and versatile

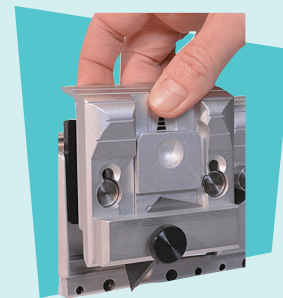
Factory-calibrated using laser technology for maximum accuracy. Guaranteed to cut within 0.2mm of a straight line for the whole length of the cutter.

Single tool cutting head allows single-handed cutting action. A choice of three blade holders provide maximum cutting options.



Reduced cutting time

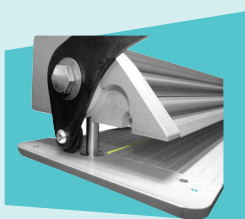
Interchangeable blade holders enable the operator to switch quickly between tools to suit different materials.



Ease of use

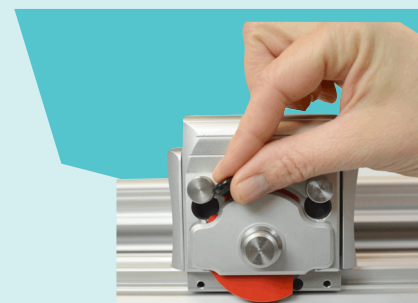
Lift & hold system is perfectly balanced for easy operation. Vertical posts guide the lifting mechanism up and down and eliminate side-to-side movement when cutter is in use.

Integral baseplate has a tapered rear edge for easy loading of material and a full-length cutting groove for use with the medium-duty or Graphik blades.



Safety by design

All blade holders come with automatic blade retraction and/or guards for safety.



OPTIONAL EXTRAS AND ACCESSORIES

Hot knife holder

The spring-loaded trigger automatically activates the hot knife when depressed, but instantly switches off when released.

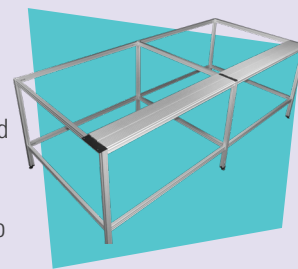
Available for HSGM and AZ hot knife cutters (as pictured).



Cutting bench

The bench is constructed from high grade alloy for supreme strength and resilience. The unique lock joint provides an ultra-rigid structure and ensures safety under heavy loads.

Please note the Javelin Integra will fit onto an existing appropriate bench if preferred.



Graphik blade holders (included)

Purpose-designed for tougher material like PVC foamboard where extra blade stability is required.

- The Graphik blades are manufactured from high-grade steel and have a special tip design for increased durability and reduced tip breakage.
- Orientates for left-right or right-left cutting.
- Sliding blade depth adjuster allows for quick and easy blade extension up to 13mm.



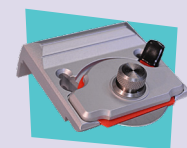
Medium duty blade holder (included)

For use with standard off-the-shelf utility blades for lighter-duty applications, where a heavier-duty Graphik blade is not required. Adjusts to a maximum blade depth of 10mm.

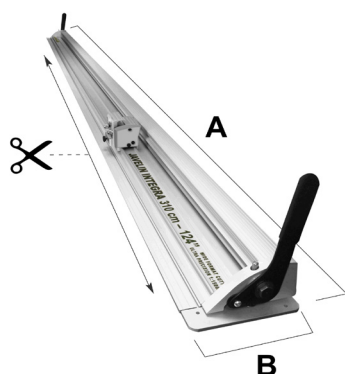


Circular blade holder (included)

To cold cut delicate textiles and other fabrics without snagging and is also ideal for trimming banners and posters where a knife would be too aggressive.



DIMENSIONS



	JT160	JIT210	JIT260	JIT310
✂ Cut Length	160cm (64")	210cm (84")	260cm (104")	310cm (124")
A	183cm (72")	233cm (91")	283cm (111")	333cm (130")
B	16cm (6.3")	16cm (6.3")	16cm (6.3")	16cm (6.3")
Packed Weight	24kg (53lbs)	28kg (62lbs)	35kg (77lbs)	40kg (88lbs)
Packed Dimensions cm (")	189x22x15cm (76x9x6")	240x22x15cm (96x9x6")	290x22x15cm (116x9x6")	336x22x15cm (134x9x6")